

Lunch 'n' Learn

ReFED Food Waste Action Network





The ReFED COVID-19 Food Waste Solutions Fund

Insights

Philanthropic donors wanted guidance and a **one-stop vehicle to support organizations on the front-lines** of rescuing food and getting it to the most vulnerable communities.

Action

ReFED launched its COVID-19 Food Waste Solutions Fund and **quickly raised \$3.5 million** from 60 donors.

ReFED **vettted over 200 organizations** and **regranted 100%** of the \$3.5 million to 37 for-profit and nonprofit organizations.

Outcomes

The **37 grantees** (logos below) funded

90M+ lbs of food recovered and **distributed to 8M+ individuals** (92% BIPOC)



ReFED Food Waste Action Network

Lunch 'n' Learn: The Evolution of Food Recovery to Meet Changing Needs

October 6 | 1-2pm ET



ADAM LOWY
Move For Hunger



AIDEN REILLY
Farmlink



CHANELLE CHAREST
Bitwise Industries



NANCY ROMAN
Partnership for
a Healthier America



ROBIN MANTHIE
Minnesota Central
Kitchen



Robin Manthie

Managing Director

MINNESOTA CENTRAL KITCHEN





NOURISHING COMMUNITY THROUGH COLLABORATION



Adam Lowy

Executive Director

MOVE FOR HUNGER



Move For Hunger



Moving?
Set aside your unopened,
non-perishable food items



Our crew will pack up your
food and deliver it to the
local food pantry



From there, your donations
will be sorted and delivered
to local families in need.

Fresh Food Recovery

- RI Cold Storage Hub
- Truck Share Pilot
- Adding Cold Storage to Farms



Offer: Free transportation to move perishable food to food banks (within 50 miles origin – destination)

Ask: \$50k funding to complete our cold storage hub in RI

Channelle Charest

Chief Operating Officer

BITWISE INDUSTRIES



Bitwise INDUSTRIES

- **Mission** - Building tech economies to upskill underserved and underrepresented populations that help empower individuals to change their own lives and ignite and transform the economies in their hometowns
- **Take Care** - COVID Emergency Response related to food insecurity in the BW communities utilizing Bitwise Technology Consulting
- **Partners** - Aloha Harvest, Replate
- **Ask and Offer** - Partnerships



Aidan Reilly

Co-Founder

THE FARMLINK PROJECT



the farmlink project



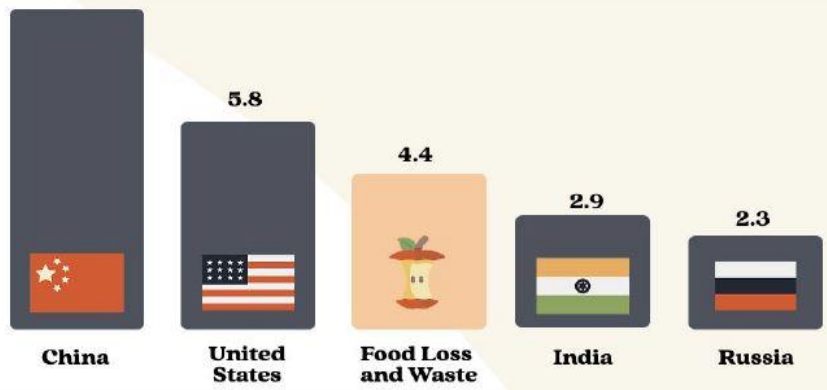
The Farmlink Project
Receives Donations



Students Source
Unsold Produce



Produce Transported
to Foodbanks



44,975,220
lbs of food moved

40,907,240
lbs of CO₂ Emissions Prevented



Fund projects
that fight
climate
change and
improve the
food system

Support The
Farmlink
Project in
our mission
to end food
insecurity

Nancy Roman

President & CEO

PARTNERSHIP FOR A HEALTHIER AMERICA



Partnership for a Healthier America (PHA)



Our Goal: Families living in every zip code across the country have access to healthy, sustainable food.

Our Mission: Transform the food landscape in pursuit of food equity.

Our Programs

- **Good Food For All** has provided 15 million servings of fresh fruits and vegetables for communities in need
- **Healthy Hunger Relief** partners with 50+ food banks to add vegetables and fruit while removing less nutritious offerings
- **Veggies Early & Often** challenges children's food companies to add real vegetables to their products
- Our **Mississippi Delta** work partners with the community to advance food equity in the region



Get involved: Take the Food Equity Pledge at ahealthieramerica.org/demandfoodequity

Thank you for being a part of the
**ReFED Food Waste
Action Network**





Scaling Action:

Opportunities for Food Waste Solution Providers to Engage with ReFED

OCT 14 | 1:00PM ET

REGISTER NOW!



Following the Roadmap Webinar Series:

Strengthen Food Rescue

OCT, 20 | 1:00 P.M. ET



In partnership with **foodtank**
THE THINK TANK FOR FOOD



Stay Connected



@refed

refed.com

insights.refed.com

Questions/Feedback: lily.herd@refed.org

Food Waste Action Network: bit.ly/JoinReFEDFWAN